

# Relative and absolute pressure switch type 529

Pressure range  
-1 ... 0 – 60 bar



The compact type 529 pressure switch is based upon the Huba Control developed unique ceramic technology used for the last 20 years in millions of applications.

Switching points set in factory are available both N/C and N/O function. Various electrical and pressure connections are available to suit given applications.

- Compact, rugged construction
- Negligible temperature influence on accuracy
- Saving time by quick cable mounting by the customer with swift connector
- Large selection of connections available.

## Technical overview

### Pressure range

|          |                   |
|----------|-------------------|
| Relative | -1 ... 0 – 60 bar |
| Absolute | 0 ... 1 – 16 bar  |

### Operating conditions

|                                       |         |                        |
|---------------------------------------|---------|------------------------|
| Medium                                |         | Liquids and gases      |
| Temperature                           | Medium  | FPM -15 ... +125 °C    |
|                                       |         | EPDM -40 ... +125 °C   |
|                                       |         | NBR -20 ... +100 °C    |
|                                       |         | MVQ -40 ... +125 °C    |
|                                       |         | Ambient -30 ... +85 °C |
| Storage                               |         | -50 ... +100 °C        |
| Tolerable overload / Rupture pressure | ≤ 4 bar | 3.0 x fs               |
|                                       | > 4 bar | 2.5 x fs               |

### Materials

|                                  |                     |  |
|----------------------------------|---------------------|--|
| Pressure Connection              |                     | Stainless steel 1.4404 / AISI 316L           |
| Plug accommodation               |                     | Polyarylamide 50% GF VO                      |
| Materials in contact with medium | Pressure connection | Stainless steel 1.4404 / AISI 316L           |
|                                  | Sensor              | Ceramic Al <sub>2</sub> O <sub>3</sub> (96%) |
|                                  | Sealing material    | FPM, EPDM, NBR, MVQ                          |

### Electrical overview

|                     |                        |                                |
|---------------------|------------------------|--------------------------------|
| Output              |                        | Semiconductor (open collector) |
| Switching contact   | High-Side Switch (PNP) | N/C contact or N/O contact     |
| Switch last         | High-Side Switch (PNP) | max. 200 mA                    |
| Power supply        |                        | 7 ... 33 VDC                   |
| Current consumption |                        | < 4 mA                         |
| Insulation voltage  |                        | 500 VDC                        |

### Protection class

Protection class III

### Dynamic response

|               |                   |
|---------------|-------------------|
| Response time | < 2 ms, 1 ms typ. |
| Load cycle    | < 100 Hz          |

### Adjustment of switching points (factory set)

|                       |               |
|-----------------------|---------------|
| Upper switching point | 8 ... 100% fs |
| Lower switching point | 5 ... 97% fs  |
| Hysteresis            | ≥ 3 % fs      |

### Protection standard

IP 67

### Electrical connection

Swift connector without or with cable 1.5 m  
Connector M12x1

### Pressure connection

|                |               |  |
|----------------|---------------|--|
| Inside thread  | 7/16 - 20 UNF |  |
|                | 1/2 - 14 NPT  |  |
|                | G 1/4         | with O-Ring seal FPM spec. (-30 ... +135 °C)   |
| Outside thread | 7/16 - 20 UNF |  |
|                | 1/4 - 18 NPT  |  |
|                | G 1/4         | sealed at back DIN 3852 form E with Profile seal ring in FPM spec. (-30 ... +135 °C)       |
|                | R 1/4         | DIN 2999   |
|                | G 1/2         | sealed at back and manometer (combi) with Profile seal ring in FPM spec. (-30 ... +135 °C) |
|                | M20x1.5       |  |
|                | G 1/2         | sealed at front  |

### Installation arrangement

Unrestricted

### Tests / Admissions

|                                 |   |
|---------------------------------|---|
| Electromagnetic compatibility   | CE conformity acc. EN 61326-2-3   |
| Shock acc. IEC IEC 68-2-27      | 100 g, 11 ms half sine wave, all 6 directions, free fall from 1 m on concrete (6x)                          |
| Constant shock acc. IEC 68-2-29 | 40 g for 6 ms, 1000x all 3 directions   |
| Vibration acc. IEC 68-2-6       | 20 g, 15 ... 2000 Hz, 15 ... 25 Hz with amplitude ± 15 mm, 1 Octave/min. all 3 directions, 50 constant load |

### Weight

~ 90 g

### Packaging (Please state on order)

|  |                        |
|--|------------------------|
| Single packaging in cardboard            | accessories integrated |
| Multiple packaging in cardboard (25 pcs) |                        |

## Accuracy

| Parameter                               |      | Unit     |        |
|---|------|----------|--------|
| Switching points <sup>1)</sup>          |      | % fs     | ± 0.5  |
| Resolution                              |      | % fs     | 0.1    |
| Thermal characteristic <sup>2)</sup>    | max. | % fs/10K | ± 0.2  |
| Long term stability acc. IEC EN 60770-1 | max. | % fs     | ± 0.25 |

Test conditions: 25°C, 45% RH, power supply 24 VDC

## Order code selection table in bar

529. X X X X X X X X X X X X

|   |  |  |   |   |   |   |  |   |   |   |  |  |  |   |  |  |  |  |  |   |   |   |
|---|--|--|---|---|---|---|--|---|---|---|--|--|--|---|--|--|--|--|--|---|---|---|
| Pressure range (relative) <sup>3)</sup> | -1 ... 0 bar   |  |   | 9 | 0 | 1 |  |   |   |   |  |  |  |   |  |  |  |  |  |   |   |   |
|   | 0 ... 1 bar  |  |   | 9 | 1 | 1 |  |   |   |   |  |  |  |   |  |  |  |  |  |   |   |   |
|   | 0 ... 1.6 bar  |  |   | 9 | 1 | 2 |  |   |   |   |  |  |  |   |  |  |  |  |  |   |   |   |
|   | 0 ... 2.5 bar  |  |   | 9 | 1 | 4 |  |   | 0 |   |  |  |  |   |  |  |  |  |  |   |   |   |
|   | 0 ... 4 bar  |  |   | 9 | 1 | 5 |  |   | 0 |   |  |  |  |   |  |  |  |  |  |   |   |   |
|   | 0 ... 6 bar  |  |   | 9 | 1 | 7 |  |   | 0 |   |  |  |  |   |  |  |  |  |  |   |   |   |
|   | 0 ... 10 bar   |  |   | 9 | 3 | 0 |  |   | 0 |   |  |  |  |   |  |  |  |  |  |   |   |   |
|   | 0 ... 16 bar   |  |   | 9 | 3 | 1 |  |   | 0 |   |  |  |  |   |  |  |  |  |  |   |   |   |
|   | 0 ... 25 bar   |  |   | 9 | 3 | 2 |  |   | 0 |   |  |  |  |   |  |  |  |  |  |   |   |   |
|   | 0 ... 40 bar   |  |   | 9 | 3 | 3 |  |   | 0 |   |  |  |  |   |  |  |  |  |  |   |   |   |
| 0 ... 60 bar                            |  |  | 9 | 4 | 0 |   |  | 0 |   |   |  |  |  |   |  |  |  |  |  |   |   |   |
| Pressure range (absolute) <sup>3)</sup> | 0 ... 1 bar  |  |   | 8 | 1 | 1 |  |   |   |   |  |  |  |   |  |  |  |  |  |   |   |   |
|   | 0 ... 1.6 bar  |  |   | 8 | 1 | 2 |  |   |   |   |  |  |  |   |  |  |  |  |  |   |   |   |
|   | 0 ... 2.5 bar  |  |   | 8 | 1 | 4 |  |   |   |   |  |  |  |   |  |  |  |  |  |   |   |   |
|   | 0 ... 4 bar  |  |   | 8 | 1 | 5 |  |   |   |   |  |  |  |   |  |  |  |  |  |   |   |   |
|   | 0 ... 6 bar  |  |   | 8 | 1 | 7 |  |   |   |   |  |  |  |   |  |  |  |  |  |   |   |   |
|   | 0 ... 10 bar   |  |   | 8 | 3 | 0 |  |   |   |   |  |  |  |   |  |  |  |  |  |   |   |   |
|   | 0 ... 16 bar   |  |   | 8 | 3 | 1 |  |   |   |   |  |  |  |   |  |  |  |  |  |   |   |   |
| Sealing material                        | FPM  | Fluoro elastomer   |   |   |   |   |  | 0 |   |   |  |  |  |   |  |  |  |  |  |   |   |   |
|   | EPDM   | Ethylene propylene   |   |   |   |   |  | 1 |   |   |  |  |  |   |  |  |  |  |  |   |   |   |
|   | NBR  | Butadiene Acrylonitrile  |   |   |   |   |  | 2 |   |   |  |  |  |   |  |  |  |  |  |   |   |   |
|   | MVQ  | Silicone polymer   |   |   |   |   |  | 3 |   |   |  |  |  |   |  |  |  |  |  |   |   |   |
| Application                             | standard   |  |   |   |   |   |  |   | 0 |   |  |  |  |   |  |  |  |  |  |   |   |   |
|   | for oxygen applications  |  |   |   |   |   |  | 0 | 1 |   |  |  |  |   |  |  |  |  |  |   |   |   |
| Switching contact                       | Contact N/O  | High-Side-Switch PNP   |   |   |   |   |  |   |   | 1 |  |  |  |   |  |  |  |  |  |   |   |   |
|   | Contact N/C  | High-Side-Switch PNP   |   |   |   |   |  |   |   | 2 |  |  |  |   |  |  |  |  |  |   |   |   |
| Electrical connection                   | Swift connector  |  |   |   |   |   |  |   |   |   |  |  |  | 0 |  |  |  |  |  |   |   |   |
|   | Connector M12x1 <sup>4)</sup>                                    |  |   |   |   |   |  |   |   |   |  |  |  | 3 |  |  |  |  |  |   |   |   |
|   | Swift connector with cable 1.5 m                                 |  |   |   |   |   |  |   |   |   |  |  |  | L |  |  |  |  |  |   |   |   |
| Pressure connection <sup>5)</sup>       | Inside thread  | G ¼ with O-Ring seal FPM spec. (-30 ... +135 °C)   |   |   |   |   |  |   |   |   |  |  |  |   |  |  |  |  |  |   | 1 |   |
|   | Inside thread  | 7/16 -20 UNF   |   |   |   |   |  |   |   |   |  |  |  |   |  |  |  |  |  |   | K |   |
|   | Inside thread  | ½ -14 NPT  |   |   |   |   |  |   |   |   |  |  |  |   |  |  |  |  |  |   | D |   |
|   | Outside thread   | 7/16 -20 UNF   |   |   |   |   |  |   |   |   |  |  |  |   |  |  |  |  |  |   | 2 |   |
|   | Outside thread   | ¼ -18 NPT  |   |   |   |   |  |   |   |   |  |  |  |   |  |  |  |  |  |   | 3 |   |
|   | Outside thread   | G ¼ sealed at back DIN 3852 form E with Profile seal ring in FPM spec. (-30 ... +135 °C)       |   |   |   |   |  |   |   |   |  |  |  |   |  |  |  |  |  |   | 4 |   |
|   | Outside thread   | R ¼ acc. to DIN 2999   |   |   |   |   |  |   |   |   |  |  |  |   |  |  |  |  |  |   | 7 |   |
|   | Outside thread   | G ½ sealed at back and manometer (combi) with Profile seal ring in FPM spec. (-30 ... +135 °C) |   |   |   |   |  |   |   |   |  |  |  |   |  |  |  |  |  |   | 8 |   |
|   | Outside thread   | G ½ sealed at front  |   |   |   |   |  |   |   |   |  |  |  |   |  |  |  |  |  |   | 9 |   |
|   | Outside thread   | M20x1.5 <sup>4)</sup>  |   |   |   |   |  |   |   |   |  |  |  |   |  |  |  |  |  |   | E |   |
| Version                                 | without pressure tip orifice                                     |  |   |   |   |   |  |   |   |   |  |  |  |   |  |  |  |  |  |   | 1 | 1 |
|   | with pressure tip orifice  |  |   |   |   |   |  |   |   |   |  |  |  |   |  |  |  |  |  |   | 2 | 1 |
| Switching points                        | Indicate W and state switching points on order (e.g.: W40/30bar) |  |   |   |   |   |  |   |   |   |  |  |  |   |  |  |  |  |  | W |   |   |

## Accessories

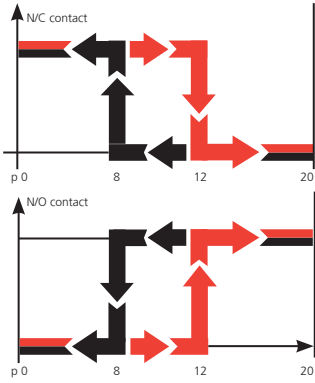
|  | Order number |
|--|--------------|
| Swift connector                                  | 107359       |
| Straight-wire box for connector M12x1            | 114570       |
| Straight-wire box for connector M12x1 with cable | 114605       |
| Corner-wire box for connector M12x1 with cable   | 114604       |
| Corner-wire box for connector M12x1              | 106975       |
| Calibration certificate                          | 104551       |

<sup>1)</sup> typ. ; max. 1.0% fs (incl. hysteresis and repeatability)  
<sup>4)</sup> Delivery without female connector

<sup>2)</sup> -15 ... 85 °C  
<sup>5)</sup> Other pressure connections on request

<sup>3)</sup> Other pressure ranges on request

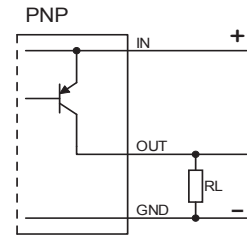
## Function



**N/C contact:** When pressure is applied ( $p_0 \rightarrow p_{max}$ ) the switch will disconnect the applied load as soon as the upper switching point is reached. As the pressure falls ( $p_{max} \rightarrow p_0$ ) the switch will connect the load as soon as the lower switching point is reached.

**N/O contact:** When pressure is applied ( $p_0 \rightarrow p_{max}$ ) the switch will connect the applied load as soon as the upper switching point is reached. With a fall in pressure ( $p_{max} \rightarrow p_0$ ) the switch will disconnect the load as soon as the lower switching point is reached.

Example:  $p_0$  20 bar  
 Upper switching point 12 bar  
 Lower switching point 8 bar  
 max. switching load 100 mA



## Order code selection table in psi

|   |   | 529.         | X | X | X | X | X | X | X | X | X | X | X | X |
|---|---|--------------|---|---|---|---|---|---|---|---|---|---|---|---|
| Pressure range (relative) <sup>1)</sup> | -30 ... 0" hg   | 9            | B | 0 |   |   |   |   |   |   |   |   |   |   |
|   | 0 ... 15 psi  | 9            | B | 1 |   |   |   |   |   |   |   |   |   |   |
|   | 0 ... 20 psi  | 9            | B | 2 |   |   |   |   |   |   |   |   |   |   |
|   | 0 ... 30 psi  | 9            | B | 4 | 0 |   |   |   |   |   |   |   |   |   |
|   | 0 ... 60 psi  | 9            | B | 5 | 0 |   |   |   |   |   |   |   |   |   |
|   | 0 ... 100 psi   | 9            | B | 7 | 0 |   |   |   |   |   |   |   |   |   |
|   | 0 ... 150 psi   | 9            | C | 0 | 0 |   |   |   |   |   |   |   |   |   |
|   | 0 ... 200 psi   | 9            | C | 1 | 0 |   |   |   |   |   |   |   |   |   |
|   | 0 ... 300 psi   | 9            | C | 2 | 0 |   |   |   |   |   |   |   |   |   |
|   | 0 ... 500 psi   | 9            | C | 3 | 0 |   |   |   |   |   |   |   |   |   |
|   | 0 ... 750 psi   | 9            | D | 0 | 0 |   |   |   |   |   |   |   |   |   |
|   | Pressure range (absolute) <sup>1)</sup>   | 0 ... 15 psi | 8 | B | 1 |   |   |   |   |   |   |   |   |   |
| 0 ... 20 psi                            |   | 8            | B | 2 |   |   |   |   |   |   |   |   |   |   |
| 0 ... 30 psi                            |   | 8            | B | 4 |   |   |   |   |   |   |   |   |   |   |
| 0 ... 60 psi                            |   | 8            | B | 5 |   |   |   |   |   |   |   |   |   |   |
| 0 ... 100 psi                           |   | 8            | B | 7 |   |   |   |   |   |   |   |   |   |   |
| 0 ... 150 psi                           |   | 8            | C | 0 |   |   |   |   |   |   |   |   |   |   |
| Sealing material                        | FPM Fluoro elastomer  |              |   |   | 0 |   |   |   |   |   |   |   |   |   |
|   | EPDM Ethylene propylene   |              |   |   | 1 |   |   |   |   |   |   |   |   |   |
|   | NBR Butadiene Acrylonitrile   |              |   |   | 2 |   |   |   |   |   |   |   |   |   |
|   | MVQ Silicone polymer  |              |   |   | 3 |   |   |   |   |   |   |   |   |   |
| Application                             | standard  |              |   |   |   | 0 |   |   |   |   |   |   |   |   |
|   | for oxygen applications   |              |   |   |   | 0 | 1 |   |   |   |   |   |   |   |
| Switching contact                       | Contact N/O High-Side-Switch PNP  |              |   |   |   |   |   | 1 |   |   |   |   |   |   |
|   | Contact N/C High-Side-Switch PNP  |              |   |   |   |   |   | 2 |   |   |   |   |   |   |
| Electrical connection                   | Swift connector   |              |   |   |   |   |   |   | 0 |   |   |   |   |   |
|   | Connector M12x1 <sup>2)</sup>   |              |   |   |   |   |   |   | 3 |   |   |   |   |   |
|   | Swift connector with cable 1.5 m  |              |   |   |   |   |   |   |   | L |   |   |   |   |
| Pressure connection <sup>3)</sup>       | Inside thread G ¼ with O-Ring seal FPM spec. (-30 ... +135 °C)  |              |   |   |   |   |   |   |   |   |   | 1 |   |   |
|   | Inside thread 7/16-20 UNF   |              |   |   |   |   |   |   |   |   |   | K |   |   |
|   | Inside thread ½-14 NPT  |              |   |   |   |   |   |   |   |   |   | D |   |   |
|   | Outside thread 7/16-20 UNF  |              |   |   |   |   |   |   |   |   |   | 2 |   |   |
|   | Outside thread ¼-18 NPT   |              |   |   |   |   |   |   |   |   |   | 3 |   |   |
|   | Outside thread G ¼ sealed at back DIN 3852 form E with Profile seal ring in FPM spec. (-30 ... +135 °C)       |              |   |   |   |   |   |   |   |   |   |   | 4 |   |
|   | Outside thread R ¼ acc. to DIN 2999   |              |   |   |   |   |   |   |   |   |   |   | 7 |   |
|   | Outside thread G ½ sealed at back and manometer (combi) with Profile seal ring in FPM spec. (-30 ... +135 °C) |              |   |   |   |   |   |   |   |   |   |   |   | 8 |
|   | Outside thread G ½ sealed at front  |              |   |   |   |   |   |   |   |   |   |   |   | 9 |
|   | Outside thread M20x1.5 <sup>2)</sup>  |              |   |   |   |   |   |   |   |   |   |   |   | E |
| Version                                 | without pressure tip orifice  |              |   |   |   |   |   |   |   |   |   |   | 1 | 1 |
|   | with pressure tip orifice   |              |   |   |   |   |   |   |   |   |   |   | 2 | 1 |
| Switching points                        | Indicate W and state switching points on order (e.g.: W30/16psi)  |              |   |   |   |   |   |   |   |   |   |   |   | W |

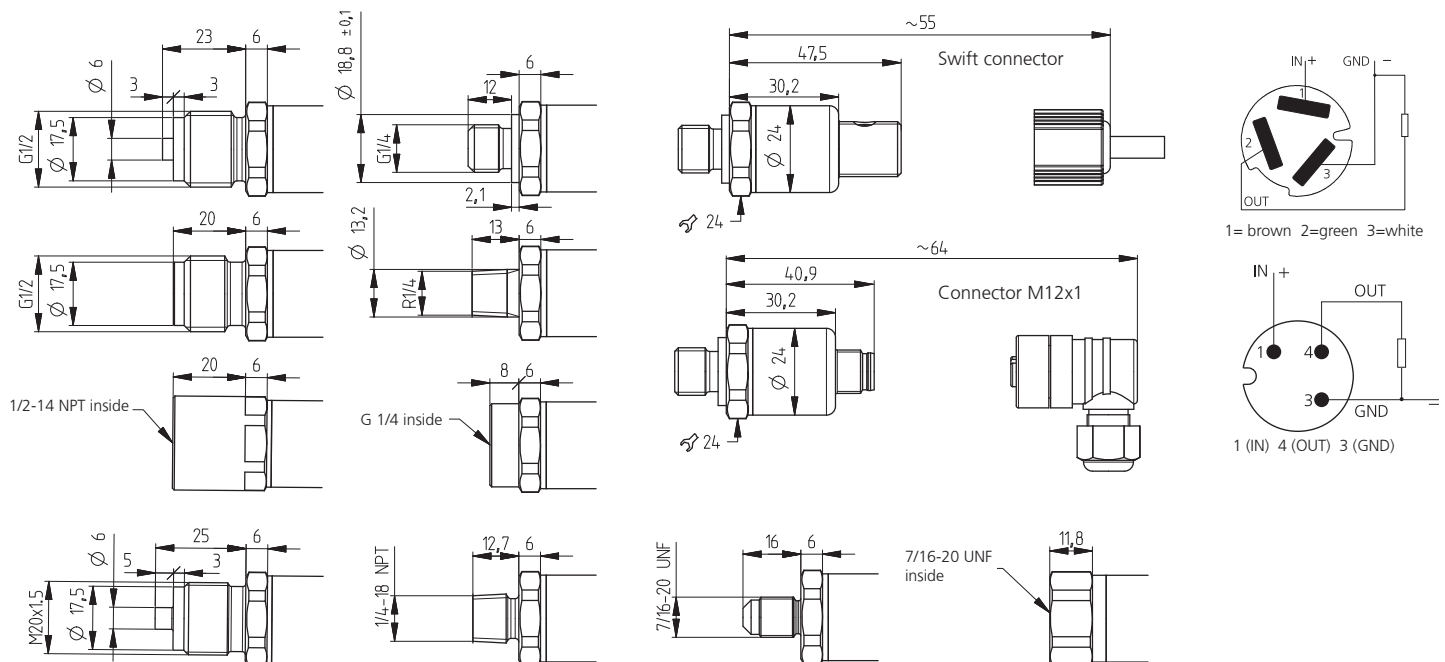
<sup>1)</sup> Other pressure ranges on request

<sup>2)</sup> Delivery without female connector

<sup>3)</sup> Other pressure connections on request

| Order code selection table in MPa       |  |  | 529. X X X X X X X X X X X X |   |   |  |  |  |   |   |   |   |   |  |  |  |   |   |   |
|---|--|--|------------------------------|---|---|--|--|--|---|---|---|---|---|--|--|--|---|---|---|
| Pressure range (relative) <sup>1)</sup> | -0.1 ... 0 MPa   |  | 9                            | G | 0 |  |  |  |   |   |   |   |   |  |  |  |   |   |   |
|   | 0 ... 0.1 MPa  |  | 9                            | G | 1 |  |  |  |   |   |   |   |   |  |  |  |   |   |   |
|   | 0 ... 0.16 MPa   |  | 9                            | G | 2 |  |  |  |   |   |   |   |   |  |  |  |   |   |   |
|   | 0 ... 0.25 MPa   |  | 9                            | G | 4 |  |  |  |   | 0 |   |   |   |  |  |  |   |   |   |
|   | 0 ... 0.4 MPa  |  | 9                            | G | 5 |  |  |  |   | 0 |   |   |   |  |  |  |   |   |   |
|   | 0 ... 0.6 MPa  |  | 9                            | G | 7 |  |  |  |   | 0 |   |   |   |  |  |  |   |   |   |
|   | 0 ... 1 MPa  |  | 9                            | H | 0 |  |  |  |   | 0 |   |   |   |  |  |  |   |   |   |
|   | 0 ... 1.6 MPa  |  | 9                            | H | 1 |  |  |  |   | 0 |   |   |   |  |  |  |   |   |   |
|   | 0 ... 2.5 MPa  |  | 9                            | H | 2 |  |  |  |   | 0 |   |   |   |  |  |  |   |   |   |
|   | 0 ... 4 MPa  |  | 9                            | H | 3 |  |  |  |   | 0 |   |   |   |  |  |  |   |   |   |
| 0 ... 6 MPa                             |  | 9  | K                            | 0 |   |  |  |  | 0 |   |   |   |   |  |  |  |   |   |   |
| Pressure range (absolute) <sup>1)</sup> | 0 ... 0.1 MPa  |  | 8                            | G | 1 |  |  |  |   |   |   |   |   |  |  |  |   |   |   |
|   | 0 ... 0.16 MPa   |  | 8                            | G | 2 |  |  |  |   |   |   |   |   |  |  |  |   |   |   |
|   | 0 ... 0.25 MPa   |  | 8                            | G | 4 |  |  |  |   |   |   |   |   |  |  |  |   |   |   |
|   | 0 ... 0.4 MPa  |  | 8                            | G | 5 |  |  |  |   |   |   |   |   |  |  |  |   |   |   |
|   | 0 ... 0.6 MPa  |  | 8                            | G | 7 |  |  |  |   |   |   |   |   |  |  |  |   |   |   |
|   | 0 ... 1 MPa  |  | 8                            | H | 0 |  |  |  |   |   |   |   |   |  |  |  |   |   |   |
|   | 0 ... 1.6 MPa  |  | 8                            | H | 1 |  |  |  |   |   |   |   |   |  |  |  |   |   |   |
| Sealing material                        | FPM  | Fluoro elastomer   |                              |   |   |  |  |  |   |   | 0 |   |   |  |  |  |   |   |   |
|   | EPDM   | Ethylene propylene   |                              |   |   |  |  |  |   |   | 1 |   |   |  |  |  |   |   |   |
|   | NBR  | Butadiene Acrylonitrile  |                              |   |   |  |  |  |   |   | 2 |   |   |  |  |  |   |   |   |
|   | MVQ  | Silicone polymer   |                              |   |   |  |  |  |   |   | 3 |   |   |  |  |  |   |   |   |
| Application                             | standard   |  |                              |   |   |  |  |  |   |   |   |   | 0 |  |  |  |   |   |   |
|   | for oxygen applications  |  |                              |   |   |  |  |  |   |   |   | 0 | 1 |  |  |  |   |   |   |
| Switching contact                       | Contact N/O  | High-Side-Switch PNP   |                              |   |   |  |  |  |   |   |   |   |   |  |  |  | 1 |   |   |
|   | Contact N/C  | High-Side-Switch PNP   |                              |   |   |  |  |  |   |   |   |   |   |  |  |  | 2 |   |   |
| Electrical connection                   | Swift connector  |  |                              |   |   |  |  |  |   |   |   |   |   |  |  |  |   | 0 |   |
|   | Connector M12x1 <sup>2)</sup>                                    |  |                              |   |   |  |  |  |   |   |   |   |   |  |  |  |   | 3 |   |
|   | Swift connector with cable 1.5 m                                 |  |                              |   |   |  |  |  |   |   |   |   |   |  |  |  |   | L |   |
| Pressure connection <sup>3)</sup>       | Inside thread  | G 1/4 with O-Ring seal FPM spec. (-30 ... +135 °C)   |                              |   |   |  |  |  |   |   |   |   |   |  |  |  |   |   | 1 |
|   | Inside thread  | 7/16-20 UNF  |                              |   |   |  |  |  |   |   |   |   |   |  |  |  |   |   | K |
|   | Inside thread  | 1/2-14 NPT   |                              |   |   |  |  |  |   |   |   |   |   |  |  |  |   |   | D |
|   | Outside thread   | 7/16-20 UNF  |                              |   |   |  |  |  |   |   |   |   |   |  |  |  |   |   | 2 |
|   | Outside thread   | 1/4-18 NPT   |                              |   |   |  |  |  |   |   |   |   |   |  |  |  |   |   | 3 |
|   | Outside thread   | G 1/4 sealed at back DIN 3852 form E with Profile seal ring in FPM spec. (-30 ... +135 °C)       |                              |   |   |  |  |  |   |   |   |   |   |  |  |  |   |   | 4 |
|   | Outside thread   | R 1/4 acc. to DIN 2999   |                              |   |   |  |  |  |   |   |   |   |   |  |  |  |   |   | 7 |
|   | Outside thread   | G 1/2 sealed at back and manometer (combi) with Profile seal ring in FPM spec. (-30 ... +135 °C) |                              |   |   |  |  |  |   |   |   |   |   |  |  |  |   |   | 8 |
|   | Outside thread   | G 1/2 sealed at front  |                              |   |   |  |  |  |   |   |   |   |   |  |  |  |   |   | 9 |
|   | Outside thread   | M20x1.5 <sup>2)</sup>  |                              |   |   |  |  |  |   |   |   |   |   |  |  |  |   |   | E |
| Version                                 | without pressure tip orifice                                     |  |                              |   |   |  |  |  |   |   |   |   |   |  |  |  |   | 1 | 1 |
|   | with pressure tip orifice  |  |                              |   |   |  |  |  |   |   |   |   |   |  |  |  |   | 2 | 1 |
| Switching points                        | Indicate W and state switching points on order (e.g.: W4/1.2MPa) |  |                              |   |   |  |  |  |   |   |   |   |   |  |  |  |   |   | W |

## Dimensions in mm / Electrical connections



<sup>1)</sup> Other pressure ranges on request      <sup>2)</sup> Delivery without female connector      <sup>3)</sup> Other pressure connections on request

Huba Control AG  
Headquarters

Industriestrasse 17  
5436 Würenlos  
Telefon +41 (0) 56 436 82 00  
Telefax +41 (0) 56 436 82 82  
info.ch@hubacontrol.com

Huba Control AG  
Niederlassung Deutschland

Schlattgrabenstrasse 24  
72141 Walddorfhäslach  
Telefon +49 (0) 7127 23 93 00  
Telefax +49 (0) 7127 23 93 20  
info.de@hubacontrol.com

Huba Control SA  
Succursale France

Rue Lavoisier  
Technopôle Forbach-Sud  
57602 Forbach Cedex  
Téléphone +33 (0) 387 847 300  
Télécopieur +33 (0) 387 847 301  
info.fr@hubacontrol.com

Huba Control AG  
Vestiging Nederland

Hamseweg 20A  
3828 AD Hoogland  
Telefoon +31 (0) 33 433 03 66  
Telefax +31 (0) 33 433 03 77  
info.nl@hubacontrol.com

Huba Control AG  
Branch Office United Kingdom

Unit 13 Berkshire House  
County Park Business Centre  
Shrivenham Road  
Swindon Wiltshire SN1 2NR  
Phone +44 (0) 1993 776667  
Fax +44 (0) 1993 776671  
info.uk@hubacontrol.com