

Paper / Board

humimeter RH5 & RH6

Paper moisture meters for paper piles

Also ideal for automatically monitoring the climate of printing rooms
and paper stockrooms



78,0 °F | 6,16% | 456 kg/m³ | -27,3 td | 0,64 aw | 51,9% r.H. | 14,8% abs | 100,4 g/m² | 09 m/s | 4,90 Ugl | 163 μm | 23,2 °C | 78,8 °F | 6,21% | 1424 kg

humimeter RH5

Paper moisture meter for relative moisture

humimeter RH6

Paper moisture meter for relative and absolute moisture, temperature compensated paper and wood equilibrium moisture content, calibration curves for determination of water content



Features:

humimeter RH5

- Relative air humidity 0 to 100%, resolution 0.1% RH
- Calibration 10 to 90% +/-1.5% RH (at 25°C)
- Temperature can be set to °C or °F as required
- Temperature -10 to +60°C/14 to 140°F, resolution 0.1°C
- Calibration +/-0.3°C (at 25°C)
- Dew point -55 to +60°C/-67 to 140°F, resolution 0.1°C
- Hold function, manual saving of results
- Automatic datalog for up to 10,000 logs with measuring point report
- Rapid adjustment
- Scope of supply: *humimeter* RH5 with rubber protection cover, wooden case and batteries

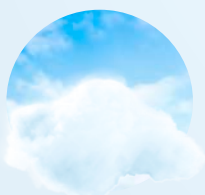
humimeter RH6

Additional functions:

- Absolute air humidity 0 to 130 g/m³, resolution 0.1g/m³
- Temperature compensated paper and wood equilibrium moisture content, calibration curves for determination of water content
- Customer calibration function
- Scope of supply: *humimeter* RH6 with rubber protection cover, *humimeter* USB data interface module with Log-Memorizer measuring data recording and analysing software on USB flash drive incl. USB cable for PC, wooden case and batteries

Measuring procedure:

To determine the moisture in paper piles, the sword sensor is inserted into the paper stack and left there for a short conditioning time. The large, well-lit display shows the current moisture and temperature value. Via the integrated datalogger the measuring values can be stored and additional data can be added. The Autolog function enables an automatic saving of measuring values in adjustable time intervals. To prevent a damage of the sword sensor in heavy paper stacks, a sword sensor holder and a tool for removing the sword sensor holder are available optionally. The *humimeter* USB data interface module offers the possibility to connect the device to a PC. Via the delivered LogMemorizer software the measuring values can be read off the device, addition information can be added, and the data can be archived, exported and processed.



Climate /
Environment



Foods



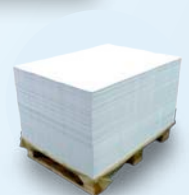
Bioenergy



Material



Buildings



Paper / Board

Schaller GmbH

Max-Schaller-Straße 99, A - 8181 St. Ruprecht an der Raab
 Tel +43 (0)3178 - 28899 , Fax +43 (0)3178 - 28899 - 901
 info@humimeter.com, www.humimeter.com

Any technical changes reserved. Pictures do not show possible changes that have been made on different models.

A wide range of other instruments and external sensors can be found at www.humimeter.com