

Relative and absolute pressure transmitter type 680

Pressure range
0 ... 0.1 – 1000 bar

The pressure transmitters of type 680 with piezoresistive measuring elements have compensated, calibrated and amplified sensor signals which are available as standard voltage or current outputs.

The transmitter housing is available with various pressure and electrical connections.

Manufactured from stainless steel, its welded construction provides a watertight seal. With its sophisticated building block system, individual designs to meet specific applications are possible.



- Effective overload protection due to chemically etched chip diaphragm and specially designed glass gland
- Fast and affordable customer specific solutions due to building block system, even for small quantities
- Compact construction with SMD technology enhances operational reliability in the presence of shock and vibration
- Welded construction provides 100% sealing against media

Technical overview

Pressure type ¹⁾

Relative and absolute	0 ... 25 bar
Overpressure	> 25 ... 1000 bar

Overload

At Pressure ranges 0.1 ... 2 bar	3x pressure range, min. 3 bar
At Pressure ranges > 2 ... 600 bar	3x pressure range, max. 850 bar
At Pressure ranges > 600 ... 1000 bar	1500 bar

Rupture pressure

At Pressure ranges 0.1 ... 2 bar	> 200 bar
At Pressure ranges > 2 ... 600 bar	> 850 bar
At Pressure ranges > 600 ... 1000 bar	> 1500 bar

Medium

Permissible medium	liquids and gases
--------------------	-------------------

Material

Pressure connection, diaphragm, case	stainless steel 1.4435 (316L) (Titanium or Hastelloy C on request)
Sealing material	FPM (other on request)

Temperature ²⁾

Medium temperature	-40 ... +150 °C
Ambient temperature	-40 ... +125 °C
Storage temperature	-40 ... +125 °C

Output and power supply ^{3) 4)}

	output	power supply	permissible load ⁵⁾
3-wire	0 ... 5 V	12 ... 30 VDC	> 10 kOhm
2-wire	0 ... 10 V	12 ... 30 VDC	> 10 kOhm
2-wire	4 ... 20 mA	9 ... 33 VDC	$\frac{\text{supply voltage} - 9V}{0.02 A}$ [Ohm] max.
2-wire (Ex)	4 ... 20 mA	9 ... 28 VDC	$\frac{\text{supply voltage} - 9V}{0.02 A}$ [Ohm] max.

Ex-Version

	gas	dust
Ex-Admission	II 1G Ex ia IIB/IIC T3 ... T6	II 1D Ex iaD 20 IP6x T145 ... T70 °C
Standards	EN 60079-0 / EN 60079-11	EN 61241-0 / EN 61241-11

Temperature class Ex-Version

	T6	T4	T3
Ambient temperature Ta	-40 ... +50 °C	-40 ... +85 °C	-40 ... +125 °C
Medium temperature	-40 ... +50 °C	-40 ... +110 °C	-40 ... +150 °C

Electrical connection

Cable	PUR, PE or Teflon in variable lengths ⁶⁾
Connector ⁷⁾	DIN EN 175301-803-A / Lumberg RSF 4 / RSF 50 / Binder 723

Pressure connection

Inside thread	G 1/4 ¹⁾
Outside thread	G 1/4, G 1/2 ¹⁾

Tests / Admissions

	norm	character	level
Mechanical load	EN 60068-2-6	vibration	10 g (4 ... 2000 Hz, oscillation ± 10 mmpp)
	EN 60068-2-27	shock	100 g (pulse duration 6 ms)
Interference emit	EN 55022	emitted interference, class B	< 30 dBµV/m (0.03 ... 1 GHz)
	EN 61000-4-2	discharge static electricity	8 kV contact-, 15 kV air discharge
	EN 61000-4-3	electromagnetic radiation	10 V/m, 0.08 ... 2.7 GHz, 80% AM 1 kHz, 3s
Interference resistance	EN 61000-4-4	fast transients (burst)	4 kV
	EN 61000-4-5	impulse voltage (surge)	Line-Line 0.5 kV/42 Ohm, Line-Earth 1 kV/42 Ohm
	EN 61000-4-6	grid-bound electromagnetic blockage	10 V, 0.15 ... 80 MHz, 80% AM 1 kHz, 3s

Packaging

Single packaging	carton padded cellular material
------------------	---------------------------------

Weight

Cable version (2 m)	~ 250 g
Connector version	~ 150 g

Accuracy

	total error band ^(*) [±%fs] per pressure ranges [bar]				
	0.1 ... 0.5	> 0.5 ... 2	> 2 ... 100	> 100 ... 600	> 600 ... 1000
Characteristic line deviation [±%FS] 0.25 or 0.1 (typ./ max.) 0 ... +70 °C	1.0 / 1.5	0.7 / 1.0	0.7 / 1.0	0.7 / 1.0	0.7 / 1.0
(typ./ max.) -25 ... +100 °C	2.0 / 2.5	1.0 / 1.5	1.0 / 1.5	1.0 / 1.5	1.0 / 1.5
Characteristic line deviation [±%FS] 0.05 (typ. / max.) 0 ... +70 °C	-	0.3 / 0.5	0.3 / 0.5	-	-
(typ. / max.) -25 ... +100 °C	-	0.75 / 1.0	0.75 / 1.0	-	-

^(*) total error band incl. characteristic line deviation, temperature error zero point and operating range, hysteresis and repeatability at max. signal range.

¹⁾ See order code selection table. Other on request

²⁾ Compensated temperature range see order code selection table

³⁾ Short circuit proof with polarity reversal protection

⁴⁾ Influence from the supply voltage types < 0.05% fs

⁵⁾ Influence permissible load < 0.05% fs

⁶⁾ Standard length 2 m

⁷⁾ Delivery without female connector

Order code selection table				680. X X X X X X X X X X X																			
Pressure type	Relative			8																			
	Absolute			7																			
	Overpressure			6																			
Pressure range ¹⁾	0 ... 100 mbar				0	0																	
	0 ... 160 mbar				0	1																	
	0 ... 250 mbar				0	2																	
	0 ... 400 mbar				0	3																	
	0 ... 600 mbar				0	4																	
	0 ... 1 bar				0	5																	
	0 ... 1.6 bar				0	6																	
	0 ... 2.5 bar				0	7																	
	0 ... 4 bar				0	8																	
	0 ... 6 bar				0	9																	
	0 ... 10 bar				1	0																	
	0 ... 16 bar				1	1																	
	0 ... 25 bar				1	2																	
	0 ... 40 bar			6	1	3																	
	0 ... 60 bar			6	1	4																	
	0 ... 100 bar			6	1	5																	
	0 ... 160 bar			6	1	6																	
	0 ... 250 bar			6	1	7																	
	0 ... 400 bar			6	1	8																	
0 ... 600 bar			6	1	9																		
0 ... 1000 bar			6	2	0																		
Output / power supply	0 ... 5 V		12 ... 30 VDC										0										
	0 ... 10 V		12 ... 30 VDC										1										
	4 ... 20 mA		9 ... 33 VDC										3										
	4 ... 20 mA		9 ... 28 VDC	intrinsically safe version ^{2) 3)}									4										
Characteristic line deviation	$\leq \pm 0.25\%$ fs																		1				
	$\leq \pm 0.10\%$ fs (≤ 600 bar fs)																		2				
	$\leq \pm 0.05\%$ fs (≥ 0.5 bar ... ≤ 100 bar fs)													3,4	3								
Temperature range	0 ... + 70 °C compensated, medium temperature permissible: -40 ... +125 °C																			0			
	- 25 ... + 100 °C compensated, medium temperature permissible: -40 ... +125 °C																				1		
	- 25 ... + 100 °C compensated, medium temperature permissible: -40 ... +150 °C																					2	
	- 40 ... + 125 °C compensated, medium temperature permissible: -40 ... +125 °C																					3	
	Ex T6 (Ta: -40 ... +50 °C) 0 ... +70 °C compensated (medium temperature permissible: - 40 ... + 50 °C)													4								4	
	Ex T4 (Ta: -40 ... +85 °C) -25 ... +100 °C compensated (medium temperature permissible: - 40 ... + 110 °C)													4								5	
	Ex T3 (Ta: -40 ... +125 °C) -25 ... +100 °C compensated (medium temperature permissible: - 40 ... + 150 °C)													4								6	
Electrical connection	Connector	Fig. 1	Binder 723	5 pin	IP 67																0		
		Fig. 2	DIN EN 175301-803-A		IP 65																	1	
		Fig. 3	Lumberg	4 pin RSF 4	IP 20																	2	
		Fig. 4	Lumberg	5 pin RSF 50	IP 68	6,7																3	
	Cable ⁴⁾	Fig. 5	PUR		IP 67																	4	
		Fig. 6	PUR with kink guard		IP 67																	5	
	Fig. 5	Teflon		IP 67																	9		
Pressure connection	Inside thread	Fig. 10	G ¼																		0		
		Fig. 11	G ¼																			0	
		Fig. 12	G ¼ manometer DIN 16288																				0
	Outside thread	Fig. 13	G ½																				0
		Fig. 14	G ½ diaphragm at front																				0
		Fig. 15	G ½ diaphragm flush with front																				0
		Fig. 16	G ½ manometer DIN 16288																				0
Version																				N			

¹⁾ Other pressure ranges on request

²⁾ II 1G Ex ia IIB/IIC T3...T6 / II 1D Ex iaD 20 IP6x T145...T70°C

³⁾ Indicate correct medium

⁴⁾ Length of cable 2 m (other lengths on request)

Fig. 10

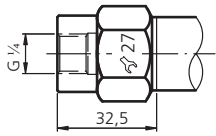


Fig. 11

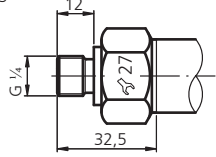


Fig. 12

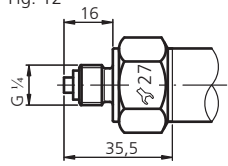


Fig. 13

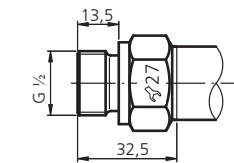


Fig. 14

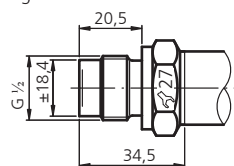


Fig. 15

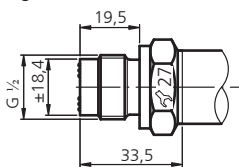
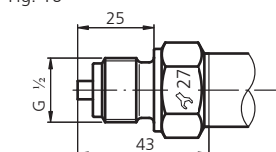
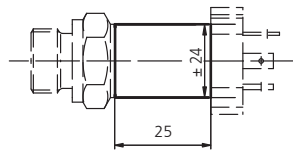


Fig. 16



Version for medium temperature up to +125 °C



Version for medium temperature > +125 ... max. +150 °C

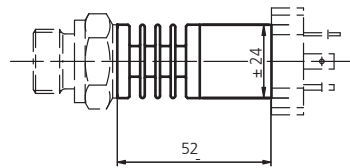


Fig. 1

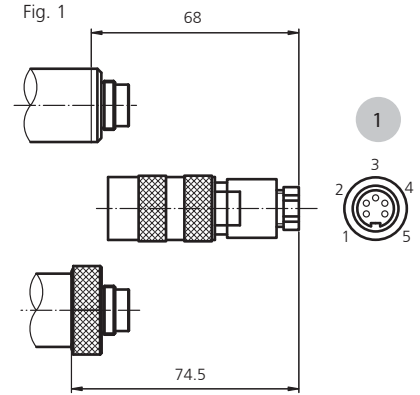


Fig. 2

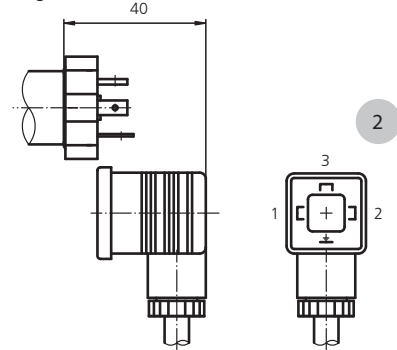


Fig. 3

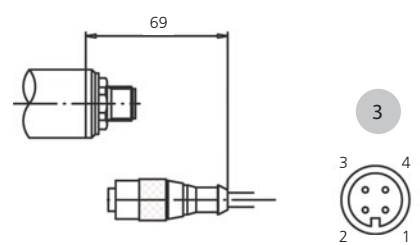


Fig. 4

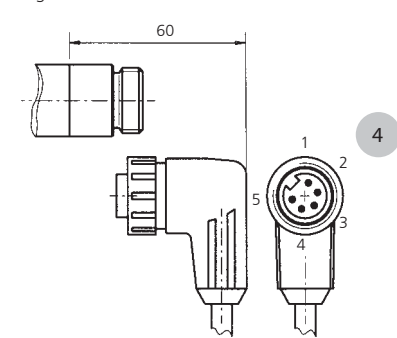


Fig. 5

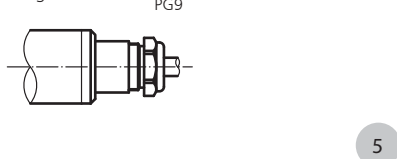
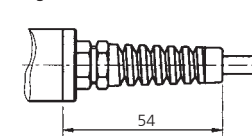


Fig. 6



	Pin / Colour	2-wire	3-wire
1	1	OUT	OUT
	3	IN	IN
	4		GND
2	1	IN	IN
	2	OUT	OUT
	3		GND
3	1		GND
	3	OUT	OUT
	4	IN	IN
4	1	OUT	OUT
	3	IN	IN
	4		GND
5	white	IN	IN
	yellow	OUT	GND
	brown		OUT

Huba Control AG

Headquarters

Industriestrasse 17
5436 Würenlos
Telefon +41 (0) 56 436 82 00
Telefax +41 (0) 56 436 82 82
info.ch@hubacontrol.com

Huba Control AG

Niederlassung Deutschland

Schlattgrabenstrasse 24
72141 Walddorfhäslach
Telefon +49 (0) 7127 23 93 00
Telefax +49 (0) 7127 23 93 20
info.de@hubacontrol.com

Huba Control SA

Succursale France

Rue Lavoisier
Technopôle Forbach-Sud
57602 Forbach Cedex
Téléphone +33 (0) 387 847 300
Télécopieur +33 (0) 387 847 301
info.fr@hubacontrol.com

Huba Control AG

Vestiging Nederland

Hamseweg 20A
3828 AD Hoogland
Telefoon +31 (0) 33 433 03 66
Telefax +31 (0) 33 433 03 77
info.nl@hubacontrol.com

Huba Control AG

Branch Office United Kingdom

Unit 3 Network Point, Range Road
Witney Oxfordshire OX29 0YD
Phone +44 (0) 1993 776667
Fax +44 (0) 1993 776671
info.uk@hubacontrol.com

Huba Control AG

Rep. Office Singapore

No. 16 Ayer Rajah Crescent Witney
#06-06B Tempco Technominium
139965 Singapore
Phone +65 (0) 61 004 822
Fax +65 (0) 63 994 822
info.sg@hubacontrol.com

Huba Control AG

Rep. Office China

CBC Building, 49A Wuyi Road
Shanghai 200050
Phone +86 (0) 21 511 808 21
Fax +86 (0) 21 515 520 99
info.cn@hubacontrol.com